

Western Cape Water Supply System Reconciliation Strategy: Berg River – Geospatial Water Quality

R Hay
D Blake
Dr K Riemann
D McGibbon
V Shoko
A Kuhudzai

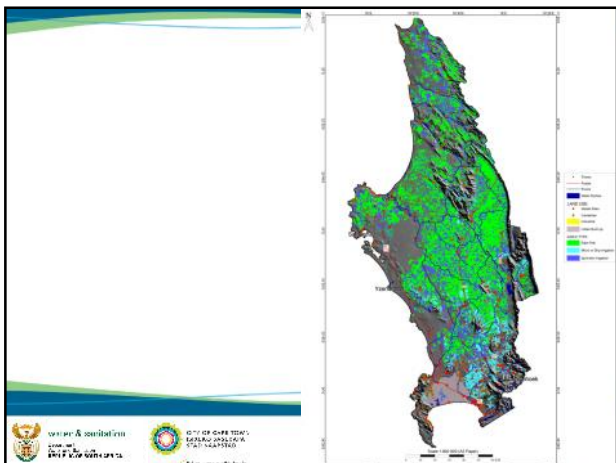
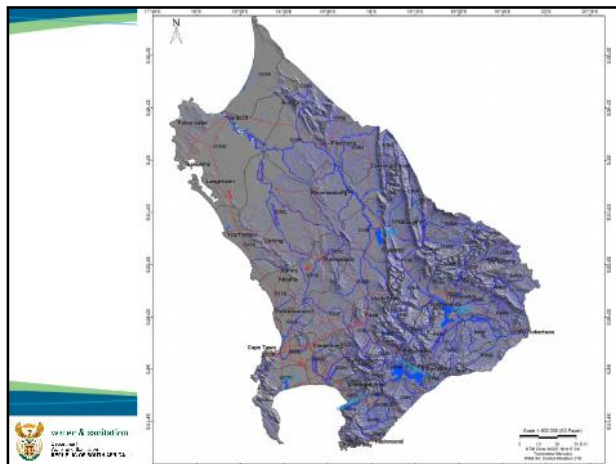
a presentation by UMS communication services

Data Source	Use
DWS	Water quality samples along the Berg River and WWTW samples
Elsenburg Agricultural Research Council	Agricultural land use map Soil maps of the Berg River catchment
IDP, SDF Reports	Urban areas List of bibliography will be emailed to all

a presentation by UMS communication services

Current Projects		Location
DEA&DP	Berg River Water Quality Monitoring	Berg River (20 sampling locations)
DEA&DP	Berg River Implementation Programme (BRIP)	Berg River
Green Cape	Market Intelligent Report: Water	Western Cape

a presentation by UMS communication services



Catchment	River	Town
G10A	Berg	Franschoek
	Wolwekloof	
	Wemmershoek	
G10B	Ollants	
	Kasteelskloof	
	Zachariasshoek	
	Bakkerskloof	
G10C	Drakenstein	Paarl
	Berg	
	Hugos	
G10D	BEF	Wellington and Hermon
	Krom	
	Kompatjies	
	Doring	
	Sand	
G10E	Lindet	Tulbagh
	Klein Berg	
	Boontjies	
	Knolvel	
	Waterreus	
G10F	Brakklouf	Gouda, Riebeck West and Riebeck Kasteel
	Berg	
	Kleinberg	
	Va	
	Koogmans Voelvlei Canal	

a presentation by UMS communication services

Catchment	River	Town
G10J	Berg	Morreesburg and Saron
	Morreesburg	
	Sandspruit	
	Vier-en-twintig	
	Leeuw	
G10H	Matjies	Piketberg and Porterville
	Assegaabospruit	
	Krom	
	Bothmanskloof	
	Jakkalskloof	
G10K	Pyls	Wittewater, Goedverwacht and Koringberg
	Witelsbospruit	
	Smits	
	Berg	
	Boesmans	
G10L	Kuilers	Darling and Hopfield
	Platkloof	
	Soutkloof	
G10M	Sout	Veldrif, Aurora and Saldanha
	Green	
	Krom	
	Brak	
	Berg	

